

1. BILL OF MATERIAL



Camera



Manual



Harness

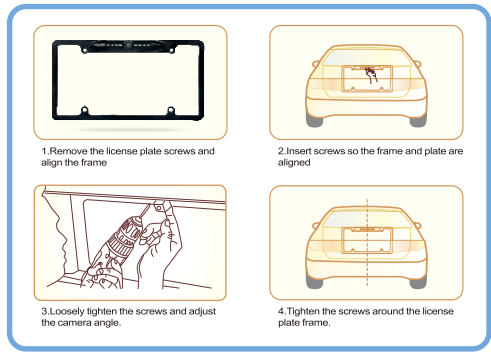


24' Male to male RCA cable

2. SPECIFICATION Cmos Image Sensor

- Zinc Metal Full Frame License Plate Mount
- CMOS Image Sensor
- 628 x 586 Resolution
- 480 TVL
- 170° Wide Viewing Angle
- Built-in true 3W white LED lights for illumination
- Reverse/Normal Image (Selectable)
- Parking Lines On/Off (Selectable)
- IP68 Waterproof Rating
- 24ft RCA Video Extension Cable
- Power Supply Range: 12VDC-24VDC
- NTSC

3. Installation Tip



4. WIRING

