

PRODUCT FEATURES:

- Retains factory features in select GM Class II Data Bus vehicles while functioning with an aftermarket radio.
- Pre-programmed to retain factory Steering Wheel Controls.
- Voice Recognition Command from factory SWC.
- Supports Bose, Y-91 and non-amplified audio systems.
- Retains chime functions.
- Built-in chime volume adjustment.
- Single DIN Dash Kit included.
- EIA color coded wiring for easy installation.

PARTS INCLUDED:



GM-48S Module



GM-48S Harness (GM-C2)

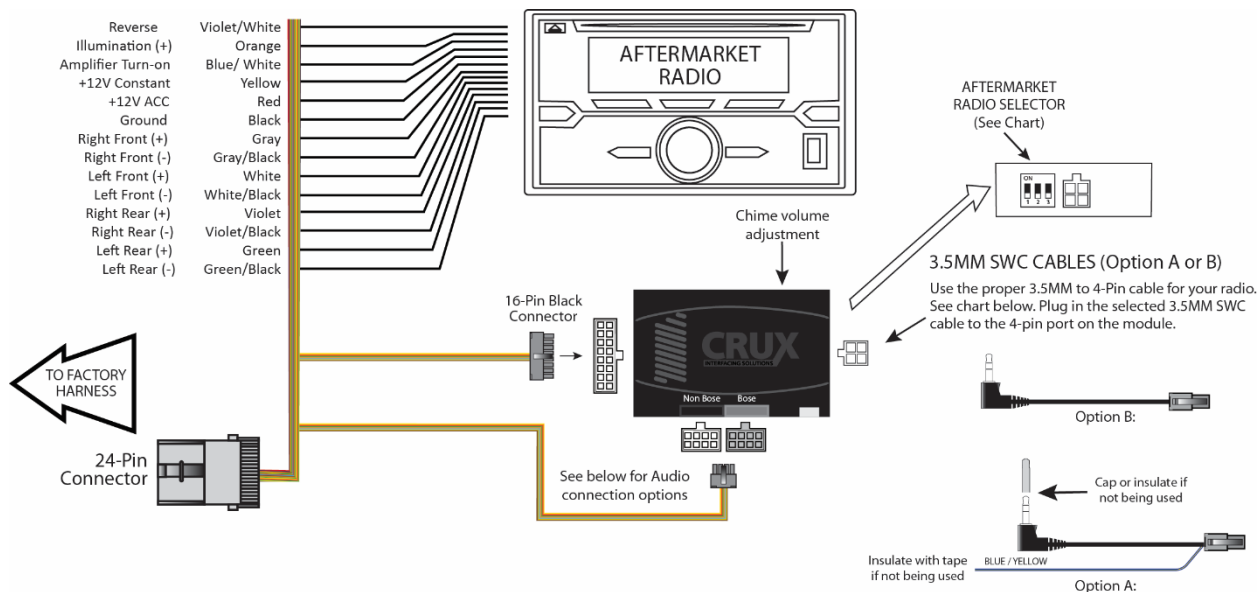


SWC Cables



Single DIN Dash Kit

INSTALLATION DIAGRAM:



NOTES:

1. The Front and Rear fading are not retained on Y-91 Bose System.
2. Chime includes: seat belt, check engine, key in ignition, low fuel, low oil and lights on.



DIP SWITCH SETTINGS:

SETTING THE AFTERMARKET RADIO BRAND

With the key in the off position, set the DIP switches to the corresponding radio listed below. See page 8 for SWC button functions.

RADIO BRAND:	DIP#:	1	2	3
Atoto, Dual, Fahrenheit, Jensen		OFF	ON	ON
Pioneer, Power Acoustik, Soundstream		OFF	ON	ON
Blaupunkt, Most off-brand Radio		OFF	ON	ON
Alpine		OFF	OFF	OFF
Clarion		ON	ON	OFF
Kenwood		ON	ON	ON
JVC		ON	OFF	ON
Boss, Old Sony		ON	OFF	OFF
New Sony		OFF	ON	OFF

SWC MODULE
DIP SWITCH



NOTE: For Atoto, Blaupunkt, Dual, Fahrenheit, Power Acoustik, Soundstream, and most off-brand radios, check the aftermarket radio's manual to see if the SWC buttons need to be programmed.

3.5MM SWC CABLE

The SWRGM-48S Module allows for both types of connections:

OPTION A is used for ALPINE, CLARION, JVC, and KENWOOD units (Blue/Yellow wire is attached)

OPTION B is used for ATOTO, BOSS, DUAL, FAHRENHEIT, JENSEN, PIONEER, POWER ACOUSTIK, SONY, SOUND STREAM and other Off-Brand headunits.

NOTE: Cap or insulate the 3.5mm plug or Blue/Yellow wire if not being used.

SELECTING THE AUDIO SYSTEM:

If the vehicle is equipped with a Bose system, the DKGM-48S has a built-in Bose adaptor that allows the proper audio input gain from the aftermarket radio to the Bose amplifier. To use this feature, plug in the male 8-pin connector on the harness to the GRAY female 8-pin connector on the GM-48S module. The module is also labeled "Bose" and "Non Bose" to avoid confusion. (see picture below)

If the vehicle is NOT equipped with a Bose system, plug in the male 8-pin connector to the BLACK female 8-pin on the GM-48S module.



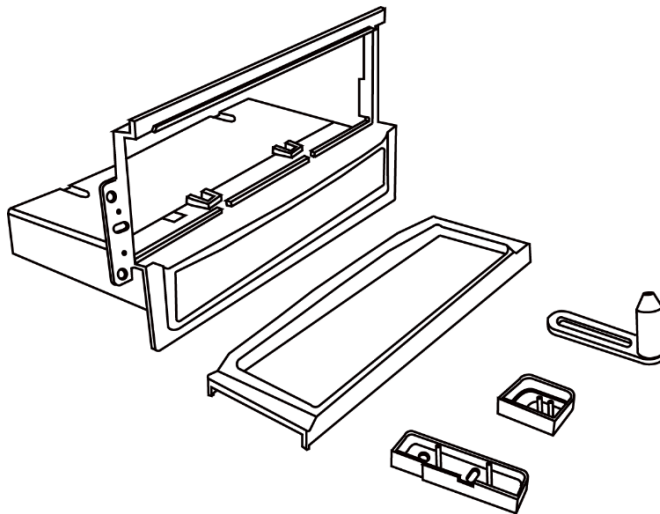
CHIME VOLUME ADJUSTMENT:

The DKGM-48S has a potentiometer to adjust the chime volume. It is set at half way by default. To adjust the volume, simply use a suitable screw driver and turn the potentiometer clockwise to increase the volume and counter-clockwise to decrease the volume.

Chime
Volume
Adjustment

**DASH KIT INSTALLATION:**

Please make sure that you have all the parts shown below.

**2001-2005 PONTIAC GRAND AM****DASH DISASSEMBLY INSTRUCTIONS**

1. Pry out trim bezel with a panel removal tool, disconnect harness and remove.
2. Remove 3 (three) screws, remove antenna lead and harnesses.
3. Remove the radio.

DIN MOUNT INSTALLATION

1. Insert DIN sleeve from your new radio into the opening of the installation kit.
2. Depress the tabs from the inside of sleeves to secure sleeves to the installation kit.



2003-2006 CADILLAC ESCALADE
2003-2006 CHEVROLET AVALANCHE
2003-2006 CHEVROLET SILVERADO
2007 CHEVROLET SILVERADO (CLASSIC)
2003-2006 CHEVROLET SUBURBAN

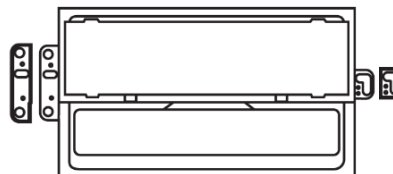
2003-2006 GMC SIERRA
2003-2006 GMC YUKON/DENALI/XL

DASH DISASSEMBLY INSTRUCTIONS

1. Place key into the ignition, turn the key to the "ON" position.
2. Shift into first gear.
3. Starting from the bottom, carefully pry the trim bezel from around the radio.
4. Remove 3 (three) bolts, remove antenna lead and harnesses.
5. Remove the radio.

DIN MOUNT INSTALLATION

1. Insert DIN sleeve from your new radio into the opening of the installation kit.
2. Depress the tabs from the inside of sleeves to secure sleeves to the installation kit.



2000-2005 CHEVROLET CAVALIER

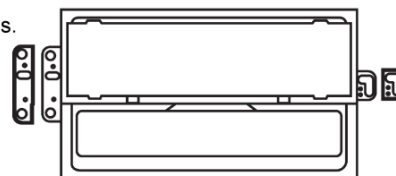
2000-2005 PONTIAC SUNFIRE

DASH DISASSEMBLY INSTRUCTIONS

1. Open the glove box, and remove 5 (five) screws.
2. Remove side panels from both the driver and passenger side.
3. Remove 1 (one) screw from each side.
4. Remove 1 (one) screw from the top center of the air vent.
5. Remove the dash bezel.
6. Remove the 3 (three) screws holding the radio, remove antenna lead and harnesses.
7. Remove the radio.

DIN MOUNT INSTALLATION

1. Insert DIN sleeve from your new radio into the opening of the installation kit.
2. Depress the tabs from the inside of sleeves to secure sleeves to the installation kit.



2004-2006 CHEVROLET COLORADO
2004 CHEVROLET EXPRESS

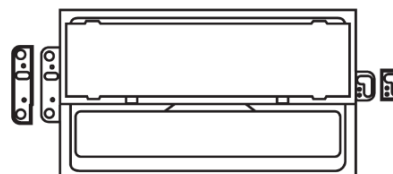
2004-2006 GMC CANYON
2003-2004 GMC SAVANA

DASH DISASSEMBLY INSTRUCTIONS

1. Starting from the bottom, carefully pry the trim bezel from around the radio.
2. Remove 3 (three) bolts, remove antenna lead and harnesses.
3. Remove the radio.

DIN MOUNT INSTALLATION

1. Insert DIN sleeve from your new radio into the opening of the installation kit.
2. Depress the tabs from the inside of sleeves to secure sleeves to the installation kit.



2000-2005 CHEVROLET IMPALA**DASH DISASSEMBLY INSTRUCTIONS**

1. Remove 2 (two) screws from above the dash board.
2. Remove the fuse panel plate and remove 1 (one) screw from the rear.
3. Remove passenger fuse plate and remove 1 (one) screw from the rear.
4. Using a panel removal tool, drop the underdash cover and remove 2 (two) screw from the rear.
5. Remove 1 (one) screw from the left side trim, tilt steering wheel column down, and pry off trim bezel.
6. Remove 3 (three) screws, remove antenna lead and harnesses.
7. Remove the radio.

DIN MOUNT INSTALLATION

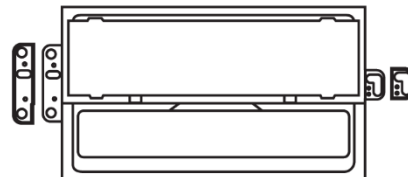
1. Insert DIN sleeve from your new radio into the opening of the installation kit.
2. Depress the tabs from the inside of sleeves to secure sleeves to the installation kit.

**2000-2005 CHEVROLET MONTE CARLO****DASH DISASSEMBLY INSTRUCTIONS**

1. Remove 1 (one) screw from the glove box.
2. Remove the ignition switch collar with a flat blade.
3. Remove 2 (two) screws from under the steering wheel column panel, and remove cover.
4. Remove fuse access plate and 2 (two) screw from the rear.
5. Tilt steering wheel column all the way down, and remove trim bezel.
6. Disconnect any harnesses and remove bezel.
7. Remove the radio.

DIN MOUNT INSTALLATION

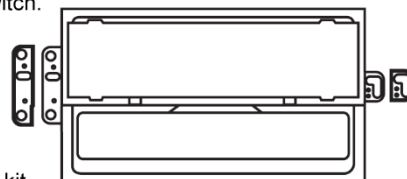
1. Insert DIN sleeve from your new radio into the opening of the installation kit.
2. Depress the tabs from the inside of sleeves to secure sleeves to the installation kit.

**2002-2004 CHEVROLET S-10****DASH DISASSEMBLY INSTRUCTIONS**

1. Place key into the ignition, turn the key to the "ON" position.
2. Shift into first gear.
3. Remove 1 (one) screw from above the dash panel.
4. Remove 5 (five) screws from below the dash pane, and remove the pane.
5. Remove 2 (two) screws from the bottom of the trim bezel, and pry out.
- NOTE: When removing the bezel, use extreme caution not to break the hazard switch.
6. Remove 3 (three) screw, remove antenna leads and harnesses.
7. Remove the radio.

DIN MOUNT INSTALLATION

1. Insert DIN sleeve from your new radio into the opening of the installation kit.
2. Depress the tabs from the inside of sleeves to secure sleeves to the installation kit.



2003-2006 CHEVROLET SSR**DASH DISASSEMBLY INSTRUCTIONS**

1. Remove the aluminum trim panel that separate the dash, using a panel removal tool.
2. Remove 6 (six) screws from the radio dash panel.
3. Remove the dash pulling outwards.

NOTE: Use extreme caution when near passenger side air bag. Bend the sides of the passenger air bag cover to release the right side of the dash.

4. Remove 3 (three) screws, remove antenna lead and harnesses.
5. Remove the radio.

DIN MOUNT INSTALLATION

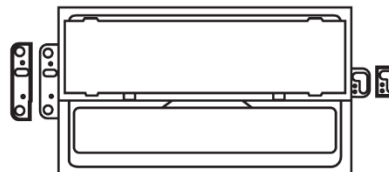
1. Insert DIN sleeve from your new radio into the opening of the installation kit.
2. Depress the tabs from the inside of sleeves to secure sleeves to the installation kit.

**2003-2006 CHEVROLET TRAILBLAZER****DASH DISASSEMBLY INSTRUCTIONS**

1. Remove 2 (two) screws from above the dash panel.
2. Remove 1 (one) screw from below the AC controls.
3. Remove 2 (two) screws from the lower dash panel above the brake panel.
4. Pry out bezel, disconnect harness and remove.
4. Remove 2 (two) screws, remove antenna lead and harnesses.
5. Remove the radio.

DIN MOUNT INSTALLATION

1. Insert DIN sleeve from your new radio into the opening of the installation kit.
2. Depress the tabs from the inside of sleeves to secure sleeves to the installation kit.

**2000-2005 CHEVROLET VENTURE****2000-2004 OLDSMOBILE SILHOUETTE****2000-2006 PONTIAC MONTANA****DASH DISASSEMBLY INSTRUCTIONS**

1. Remove ashtray and remove 2 (two) screws from the rear.
2. Starting from the bottom, carefully pry the trim bezel from around the radio.
4. Remove 3 (three) screws, remove antenna lead and harnesses.
5. Remove the radio.

DIN MOUNT INSTALLATION

1. Insert DIN sleeve from your new radio into the opening of the installation kit.
2. Depress the tabs from the inside of sleeves to secure sleeves to the installation kit.



2004-2007 BUICK RAINIER**2002-2004 GMC ENVOY****2003-2008 ISUZU ASCENDER****DASH DISASSEMBLY INSTRUCTIONS**

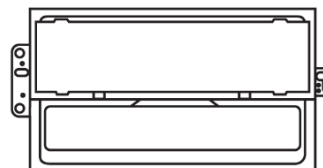
1. Remove 2 (two) screws from the front of the inside of the center console.
2. Remove the rubber pads, and remove the 4 (four) screws under there.
3. Remove the console insert.
4. Remove 2 (two) screws from the console cavity.
5. Remove rubber pad from the cup holder and remove 1 (one) screw from under there.
6. Remove 4 (four) screws from the sides of the carpeted panel under the radio and climate controls, pull down.
7. Pull the center console back, and down. Remove 2 (two) screws on the bottom of the trim bezel.
8. From the top, pry the bezel out, disconnect harness and remove.
9. Remove 3 (three) screws, remove antenna lead and harnesses.
10. Remove the radio.

**DIN MOUNT INSTALLATION**

1. Insert DIN sleeve from your new radio into the opening of the installation kit.
 2. Depress the tabs from the inside of sleeves to secure sleeves to the installation kit.
-

2003-2007 HUMMER H2**DASH DISASSEMBLY INSTRUCTIONS**

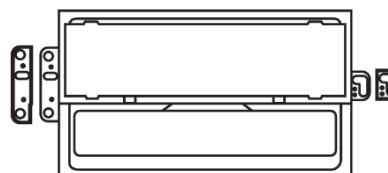
1. Remove 4 (four) screws from center console lid hinge.
2. Remove Torx lock nut that holds the Shift lever, and slide shift lever off.
3. Pop up gear indicator plate with a panel removal tool.
4. Remove 2 (two) screws at the bottom of the trim bezel.
5. Remove 2 (two) screws from trim bezel.
6. Pry out trim bezel, disconnect harness and remove.
7. Remove 3 (three) screws, remove antenna lead and harnesses.
8. Remove the radio.

**DIN MOUNT INSTALLATION**

1. Insert DIN sleeve from your new radio into the opening of the installation kit.
 2. Depress the tabs from the inside of sleeves to secure sleeves to the installation kit.
-

2002-2004 OLDSMOBILE BRAVADA**DASH DISASSEMBLY INSTRUCTIONS**

1. Remove rubber covers in the arm rest.
2. Remove 6 (six) screws.
3. Shift gear into first, and pull console up.
4. Remove 2 (two) screws from bottom of center dash panel.
5. Pull center dash away.
6. Remove 3 (three) screws, remove antenna lead and harnesses.
7. Remove the radio.

**DIN MOUNT INSTALLATION**

1. Insert DIN sleeve from your new radio into the opening of the installation kit.
2. Depress the tabs from the inside of sleeves to secure sleeves to the installation kit.



**VEHICLE APPLICATIONS:****Buick**

2004-2005	Century
2005-2007	LaCrosse
2004-2007	Rainier
2003-2007	Rendezvous
2005-2007	Terraza

Cadillac

2003-2006	Escalade
-----------	----------

Chevrolet

2003-2006	Avalanche
2000-2005	Cavalier
2004-2013	Colorado
2005-2013	Corvette
2004-2007	Express
2000-2005	Impala
2001-2003	Malibu
2000-2005	Monte Carlo
2003-2004	S-10
2003-2006	Silverado
2007	Silverado Classic
2003-2006	SSR
2003-2006	Suburban
2003-2006	Tahoe
2002-2009	Trailblazer
2005-2008	Uplander
2003-2005	Venture

GMC

2004--2011	Canyon
2002-2009	Envoy
2003-2007	Savana
2003-2006	Sierra
2007	Sierra Classic
2003-2006	Yukon

Hummer

2003-2007	H2
2005-2010	H3

Isuzu

2003-2008	Ascender
-----------	----------

Oldsmobile

2001-2004	Alero
2002-2004	Bravada
2000-2004	Silhouette

Pontiac

2001-2005	Aztec
2001-2005	Grand Am
2004-2008	Grand Prix
2000-2006	Montana
2000-2005	Sunfire

Saab

2005-2008	9-7X
-----------	------

Saturn

2005-2007	Relay
-----------	-------

